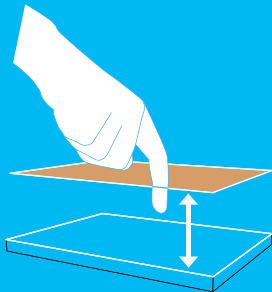


sensation
technology

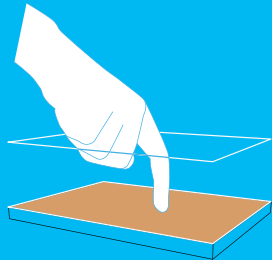
MOVING, TOUCHING, PRESSING

**AN INNOVATIVE CAPACITIVE TECHNOLOGY
EVERYTHING BECOMES POSSIBLE**

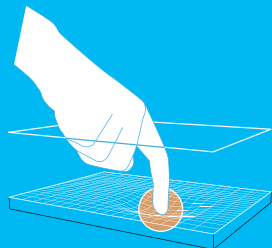
**1 - GESTURE
INTERFACE**



**2 - TACTILE
INTERFACE**



**3 - PRESSURE
INTERFACE**



FOGALE nanotech, founded in 1983, is a world-wide known reference in the field of high accuracy dimensional metrology.

Thanks to our multidisciplinary team with expertise in capacitive, optical, and inductive metrology and a strong scientific background, we provide standard, specific and integrated solutions.

For more information about our products,
visit our website at www.fogale.com

Headquarters : FOGALE nanotech, France
+ 33 466 620 555 - info@fogale.com

USA : FOGALE nanotech Inc, San Francisco, CA
(818) 206 8525 - info@fogale.com

FOGALE nanotech



INTRODUCES

sensation
technology



**A NEW GESTUAL & TACTILE HMI
BY A LEADER IN CAPACITIVE TECHNOLOGY**

FOGALE nanotech



LEADER IN CAPACITIVE TECHNOLOGY

TACTILE AND GESTURE INTERFACE

Everything becomes possible !

What about turning your newspaper pages, using a touch pad by just a gesture over the screen ? Activating the dashboard controls simply by approaching your hand ? Rotating a screen image just by a glance, using a tactile and gestural pad hidden under a wooden conference meeting room table ?

SenSation, created by world's leader of capacitive technology Fogale nanotech, offers new amazing human- machine interfaces (HMI) with large application fields.

SenSation frees the designer's creativity !

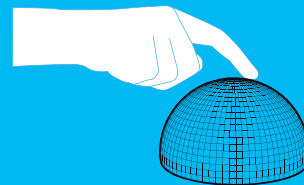
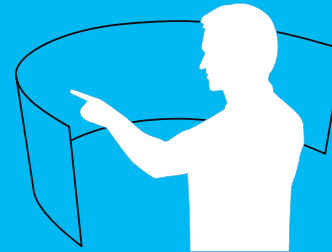
This technology can be applied to all planed, curved, or complex geometries, and can be hidden under any non conductive materials. It can also be combined with screen or LED lighting technologies, allowing any variety of designs and features.

SenSation leads the way to the conception of new human-machine interfaces, by bringing them from 2D to 3D world.

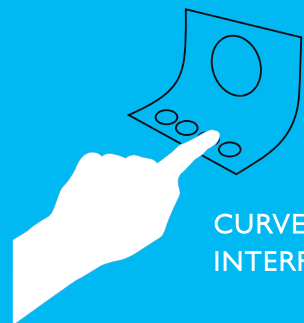
Fogale nanotech introduces SenSation at CeBIT exhibition in Hanover (from March 2nd to 6th, 2010), sharing a new way to control its environment by just a pressure, a movement, or a gesture, from the most basic to the most sophisticated commands.

FREE THE DESIGNER CREATIVITY WITH INFINITE DESIGNS

ENVIRONMENT INTERFACE



SOFT INTERFACE



CURVED INTERFACE



INTERACTIVE WALL

ANY NON CONDUCTIVE MATERIAL FOR INFINITE APPLICATIONS

WOOD
PLASTIC
CERAMICS
FOAM



ANY TOUCHPAD
ANY TOUCHSCREEN



INTEGRATED
LED LIGHTING

